



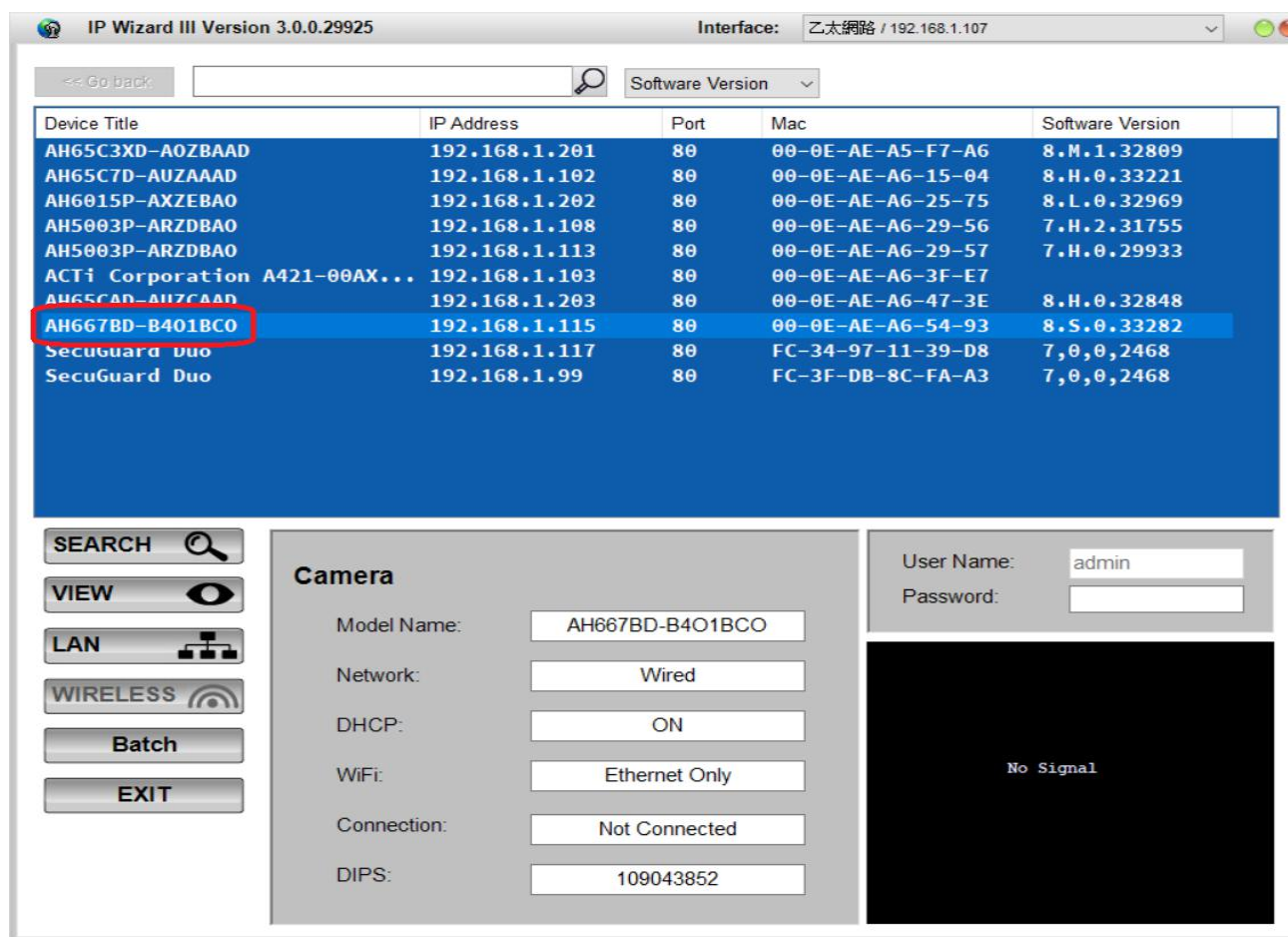
聯發光電股份有限公司

<http://www.a-mtk.com/>

請到下方網址 <http://www.a-mtk.com> 的下載區, 下載 IPWizard III 搜尋工具

或是直接點擊後方網址下載 (http://60.250.139.89/AMTK_IPWizardIII_V29925_20190925.zip)

1. 安裝 AMTK IPWizard III 用以搜尋 IPCam, 搜尋到之後, 直接滑鼠點擊兩下, 即可開啟登入畫面 (請使用 IE 瀏覽器, 連入攝影機)



2. 你也可以用此工具左下角的 “View” 直接預覽攝影機畫面, 以便確認是目前所點的是哪一支攝影機,以利後續操作

The screenshot shows the IP Wizard III software interface. At the top, it displays "IP Wizard III Version 3.0.0.29925" and "Interface: 乙太網路 / 192.168.1.107". Below this is a search bar and a "Software Version" dropdown menu. The main area contains a table of discovered devices:

Device Title	IP Address	Port	Mac	Software Version
AH65C3XD-A0ZBAAD	192.168.1.201	80	00-0E-AE-A5-F7-A6	8.M.1.32809
AH65C7D-AUZAAD	192.168.1.102	80	00-0E-AE-A6-15-04	8.H.0.33221
AH6015P-AXZBAO	192.168.1.202	80	00-0E-AE-A6-25-75	8.L.0.32969
AH5003P-ARZDBAO	192.168.1.108	80	00-0E-AE-A6-29-56	7.H.2.31755
AH5003P-ARZDBAO	192.168.1.113	80	00-0E-AE-A6-29-57	7.H.0.29933
ACTi Corporation A421-00AX...	192.168.1.103	80	00-0E-AE-A6-3F-E7	
AH65CAD-AUZCAAD	192.168.1.203	80	00-0E-AE-A6-47-3E	8.H.0.32848
AH667BD-B401BCO	192.168.1.115	80	00-0E-AE-A6-54-93	8.S.0.33282
SecuGuard Duo	192.168.1.117	80	FC-34-97-11-39-D8	7,0,0,2468
SecuGuard Duo	192.168.1.99	80	FC-3F-DB-8C-FA-A3	7,0,0,2468

Below the table is a sidebar with several buttons: "SEARCH", "VIEW" (highlighted with a red box), "LAN", "WIRELESS", "Batch", and "EXIT". The "VIEW" button is associated with an eye icon. To the right of the sidebar is a "Camera" configuration panel for the selected device (AH667BD-B401BCO). The configuration includes:

- Model Name: AH667BD-B401BCO
- Network: Wired
- DHCP: ON
- WiFi: Ethernet Only
- Connection: Success
- DIPS: 109043852

At the bottom right, there is a "User Name:" field with "admin" and a "Password:" field with "*****". A red box highlights a live video feed window showing a camera view of a room with green cubicles. The video feed includes a timestamp "2011-05-20 14:06:27" and a label "臺71島日往西屯-三車道".

3. 確認好攝影機後，可以直接使用此工具進行攝影機 IP 位置的設定，設定完成後點選下方 “>>”，再點選“Submit”

The screenshot shows the IP Wizard III Version 3.0.0.29925 interface. The top bar indicates the interface is '乙太網路 / 192.168.1.107'. A table lists various devices with their titles, IP addresses, ports, MAC addresses, and software versions. The device 'AH667BD-B401BC0' is highlighted in blue, showing an IP of 192.168.1.115 and software version 8.S.0.33282. Below the table, there are navigation buttons: SEARCH, VIEW, LAN (highlighted with a red box), WIRELESS, Batch, and EXIT. The LAN configuration section is active, showing 'Static IP' selected and 'DHCP IP' unselected. The IP address is set to 192.168.1.115, Subnet Mask to 255.255.255.0, and Gateway to 192.168.1.254. A red box highlights the IP configuration fields. On the right, there are fields for User Name (admin) and Password (*****). At the bottom right, there is a '>>' button (highlighted with a red box) and a live video feed of an office interior.

Device Title	IP Address	Port	Mac	Software Version
AH65C3XD-A0ZBAAD	192.168.1.201	80	00-0E-AE-A5-F7-A6	8.H.1.32809
AH65CTD-AUZAAD	192.168.1.102	80	00-0E-AE-A6-15-04	8.H.0.33221
AH6015P-AXZBA0	192.168.1.202	80	00-0E-AE-A6-25-75	8.L.0.32969
AH5003P-ARZDBA0	192.168.1.108	80	00-0E-AE-A6-29-56	7.H.2.31755
AH5003P-ARZDBA0	192.168.1.113	80	00-0E-AE-A6-29-57	7.H.0.29933
ACTf Corporation A421-00AX...	192.168.1.103	80	00-0E-AE-A6-3F-E7	
AH65CAD-AUZCAAD	192.168.1.203	80	00-0E-AE-A6-47-3E	8.H.0.32848
AH667BD-B401BC0	192.168.1.115	80	00-0E-AE-A6-54-93	8.S.0.33282
SecuGuard Duo	192.168.1.117	80	FC-34-97-11-39-08	7.0.0.2468
SecuGuard Duo	192.168.1.99	80	FC-3F-08-8C-FA-A3	7.0.0.2468